

23 June 2026

Notification of RSPO Re-Certification 1 Assessment of Biase Plantations Limited (Calaro POM), Nigeria
Parent Company: Wilmar International Limited
RSPO Membership: 2-0017-05-000-00

To Whom It May Concern:

Biase Plantations Limited (Calaro POM) of Nigeria has commissioned SCS Global Services to conduct an RSPO Re-Certification 1 Assessment of its palm oil mill and supply bases located near Mbarakom, Akamkpa LGA, Calaba, Nigeria. The assessment will be conducted of 1 Palm Oil Mill and 3 Oil Palm Plantations.

SCS Global Services plans to conduct the Re-Certification of the **Biase Plantations Limited (Calaro POM)** from **17th – 21st August 2026**. The assessment will be conducted against the Roundtable on Sustainable Palm Oil requirements, including the Principles & Criteria (RSPO P&C 2024 including Supply Chain requirement for mills).

Wilmar International Limited, a Malaysian Company is a member of the Roundtable for Sustainable Palm Oil (RSPO) with strong commitment to sustainable development. In 2013, Wilmar International was among the first companies in the palm oil industry to commit to a stringent No Deforestation and No Peat Exploitation (NDPE) policy which extends across its entire supply chain, including joint-ventures and third-party suppliers. Most of Wilmar’s upstream operations in Nigeria involve reviving and replanting old and abandoned oil palm estates. In 2011, the company kick-started its upstream operations with Biase Plantations Limited (Calaro Palm Oil Mill), which acquired two plantations in Cross River State that were established by the government in the 1960s: the Calaro Oil Palm Estate and the Ibiae Estate. The acquisition and development of the 5,549-hectare Calaro Oil Palm Plantation involved replacing the old palm trees with high yielding cultivars from Malaysia and the installation of an ultramodern 45 ton/hour oil palm processing mills. In all cases, land acquisition was governed by the Free, Prior and Informed Consent (FPIC) process, which is central to the Principles and Criteria of the RSPO, and a core component of Wilmar’s NDPE policy. As a matter of policy, Wilmar carries out replanting existing plantations with the full support and buy-in of host communities. In line with its NDPE policy, Wilmar’s operations in Nigeria have not converted any HCV or HCS forest areas or peatlands. Wilmar holds other land titles including Calaro Extension, Kwafalls and Ibad which are however excluded from the scope of this certification but captured in its Time Bound Plan in compliance with the RSPO certification system document 2020. However, for this recertification 1, Calaro Extension was been included in the audit scope, hence will form part of the sample estates.

Biase Plantations has about 10,134.93 hectares of oil palm plantation and 1 processing unit sitting on a total of 13,513.74 ha of its all concession. 12 villages are directly impacted by Biase activities (5 close to Calaro Estate, 4 close to Ibiae and 3 close to Calaro Extension) and over 3800 direct and indirect workers employed.

The assessment will cover legal, environment, economical, workers’ health and safety, and social aspects as required by the RSPO Principles & Criteria. Below is general information related to the certification unit.

COMPANY NAME	
Parent Company	Wilmar International Limited
Mill Name	Biase Plantations Limited (Calaro Palm Oil Mill)
Address	Mbarakom, Akamkpa LGA
GPS Reference (Palm Oil Mill)	5.291084, 8.298471
Prisma Trading Account ID	TA25-017167
Mill Capacity (tonnage/hour)	45
Supply Chain Model	MB
CPO Tonnage (Projection 2026)	34,372.8
PK Tonnage (Projection 2026)	7,397.6
FFB Tonnes (Projection 2026)	142,000

Farms / Estate / Association	Location	GPS Coordinates	Planted Area (ha)	Certified Area (ha)	Annual FFB Projection (MT)
Calaro Estate	Mbarakom, Akamkpa LGA	5.290900, 8.298430	4,365.77	5,549.8	68,000
Ibiae Estate	Biase, LGA	5.096160, 8.162690	4,627.19	5,595.00	58,000
Calaro Ext	Akamkpa/Odukpani	5.226320, 8.214490	1,141.97	2,368.94	16,000
TOTAL			10,134.93	13,513.74	142,000

Location Maps:

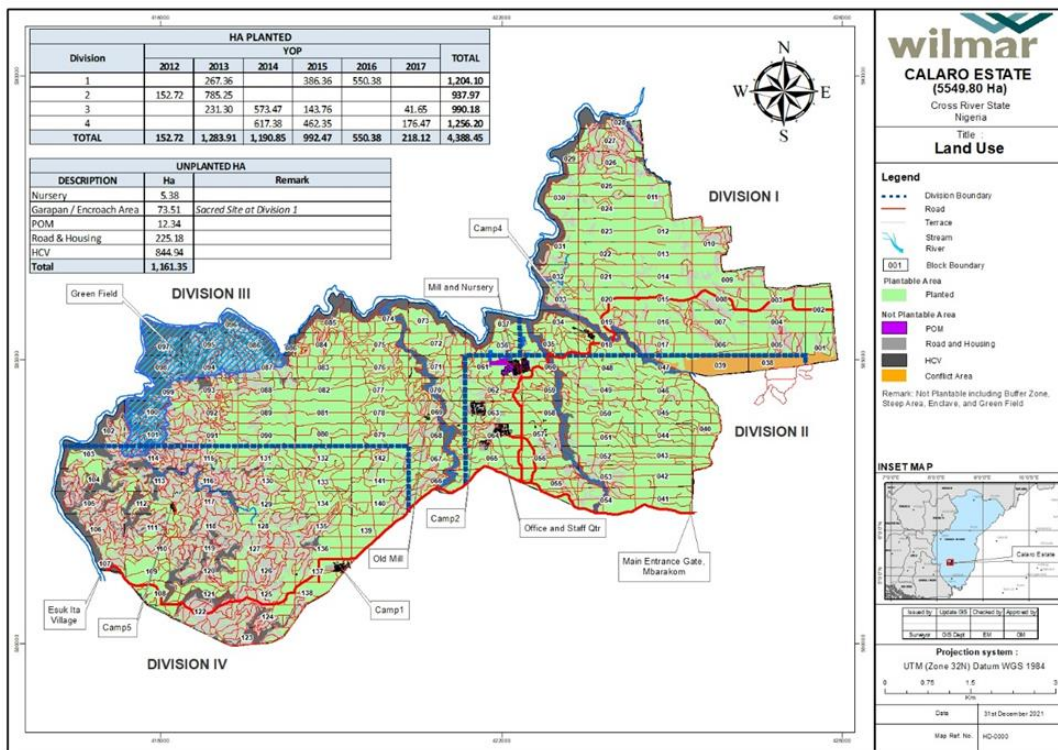


Fig 1: Map of Calaro estate showing land use

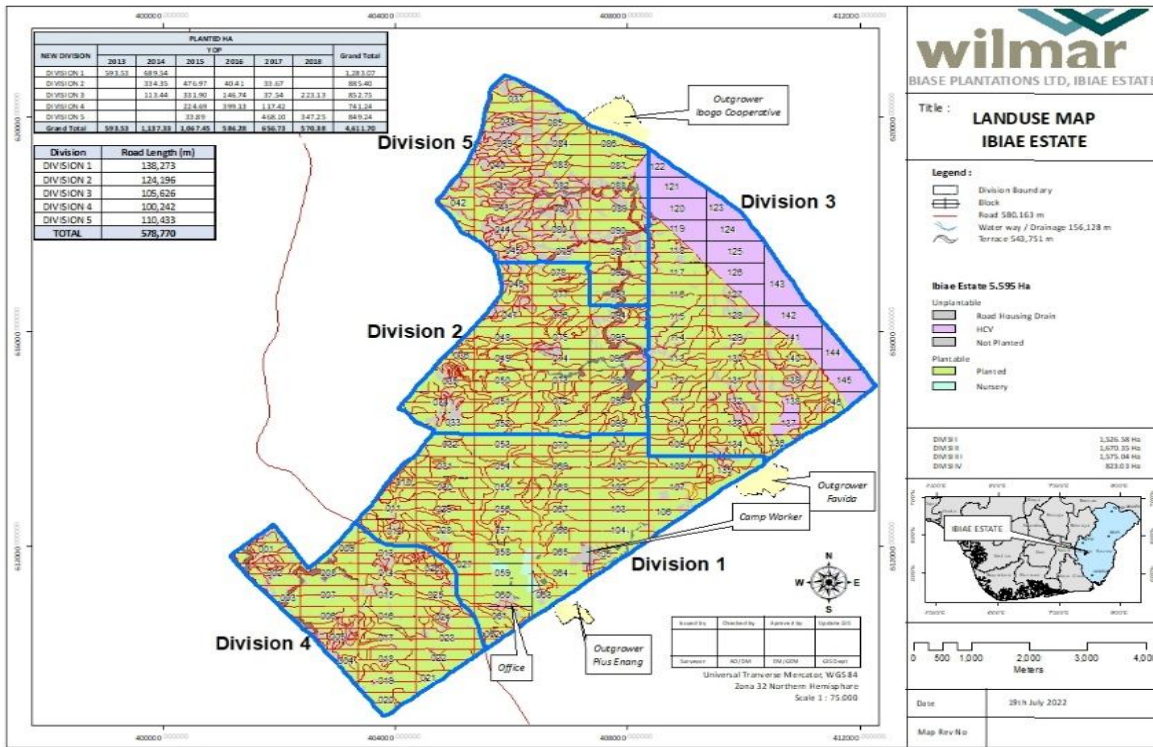


Fig 2: Map of Ibiae estate showing land use

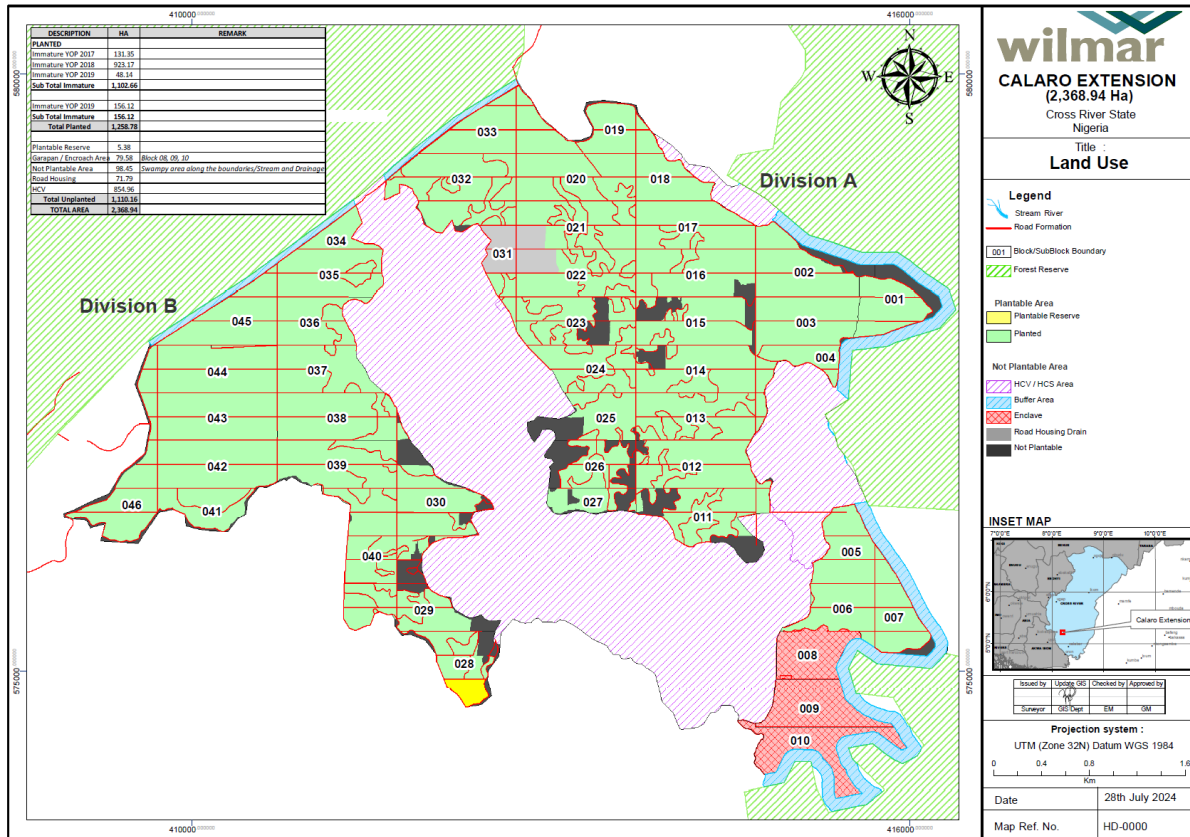


Fig 3: Map of Calaro Ext. estate showing land use

New Planting Procedure Process – NPP

Has the UoC undergo a NPP Process? YES NO

If yes, please provide the completion date of the NPP Process:

Notes: only Calaro Extension undergo NPP process, Calaro and Ibiea Estate were replanting and does not required NPP as at the time of the replanting.

Calaro Extension: 20 September 2016 (ref.: RSP0-PRO-T01-009 V1.0 page 19): <https://rspo.org/public-consultation/wilmar-international-limited-biase-plantation-limited-calaro-extension/>

Remediation and Compensation Procedure – RaCP

Is any estate on the management unite undergoing RaCP Process? YES NO

If yes, please indicate current status:

Reference: <https://rspo.org/as-an-organisation/tools/remediation-and-compensation/racp-trackers/>

SCS Global Services (SCS) is a global leader in third-party environmental and sustainability certification, auditing, testing services, and standards. Established as an independent third-party certification firm in 1984, our goal is to recognize the highest levels of performance in environmental protection and social responsibility in the private and public sectors, and to stimulate continuous improvement in sustainable development. SCS became one of the first recognized California Benefit Corporations. SCS holds itself to the highest standards in the industry and has been accredited by six different accreditation bodies covering over 15 different certification systems, including food and agriculture, forestry, greenhouse gas, indoor air quality, sustainable furniture and biofuels. SCS was approved as a RSPO certification body for supply chain certification (worldwide) on 13 January 2017. Most recently approved for Principles & Criteria scope (worldwide) 13 November 2018.

SCS Global Services has appointed the following team for the assessment of **Biase Plantations Limited (Calaro POM)**:

Name	Role	Audit Aspects	Qualification and Experience
Anthony Ebo Prah	Lead Auditor	Social, Agronomy and Smallholder Inclusion	Holds a BSc (Hon) in Agriculture from the University of Cape Coast and an MSc. in Environmental Sustainability and Management from the Wisconsin International University College in Accra. Worked on a freelance role as a consultant for 5 years, supporting Companies seeking RSPO ISH Certification. Participated in RSPO P & C and SCC mock audits. Trained as an ISO 9001:2015 Lead Auditor and an HCV ALS Assessor. Has successfully participated in several Rainforest alliance audits as the Lead in Social compliance for plantations and farms over the last 5 years.
Frank Kwesi	Auditor	Social and Supply Chain	Has master's in environmental management and policy from the University of Cape Coast, Ghana, BSc. Finance & Entrepreneurship Development, Garden City University College HND Wood Technology, Kumasi Polytechnic. Has attended and passed several certification courses including; RSPO P&C 2013 Lead Auditor Course organized by Proforest Africa, RSPO P&C 2018 Lead Auditor Refresher organized by Checkmark Training, RSPO Online Learning for the 2024 P&C, RSPO SCC Lead Auditor Course and RSPO SCC 2020 Lead Auditor Refresher organized by Checkmark Training, ISO 9001:2015 Lead Auditor, SA 8000 basic lead auditor organized by SAI, HCV Assessor training organized by Proforest Africa, FSC Forest Management & Chain of Custody Lead Auditor, Rainforest Alliance, Agriculture standard Lead Auditor Course, Possess also health and safety certificates in NEBOSH International General Certificate (Occupational Health and Safety), OHSAS 18001 Certified Auditor. Frank has also participated and attended several RSPO trainings and webinars including FPIC, DWL, Dispute Settlement Facility, RSPO Palm GHG Assessment, Introduction to RSPO P&C Metric Template, Gender Guidance to RSPO, Palmtrace New Features for ISH, RSPO Remediation and Compensation Procedures, RSPO revised NPP 2021, Prisma and the new RSPO reporting template (UAR). Frank has led several RSPO P&C and SCC audits several countries in Africa and Southeast Asia (PNG) since 2016. Frank has also led and been involved in several HCV assessment in tropical forests and natural rubber plantation operating companies in Ghana. Currently work as a full-time employee for SCS Global Services. He is fluent in English and in local languages.
Joseph W. Osei	Auditor	Environment, Health and Safety	Natural Resources Manager with specialization in Forest Economics and more than 16 years' experience in forest plantation and natural forest management. He is an RSPO and FSC Lead auditor and has ISO 14001 Lead Auditor certificate. He is also a lead auditor for other certification schemes including the UEBT, VCS, among others. He has led and participated in over 30 forest management/forest Carbon, chain-of custody audits, FLEGT VPA and RSPO baseline and P&C assessment in over 8 countries in Africa. He holds a BSc. in Natural Resources Management from the Kwame Nkrumah University of Science and Technology, Kumasi, Ghana; MSc. in Tropical Forestry with specialization in Forest Economics from the Technology

			University of Dresden, Germany and Master of Business Administration (MBA) in Strategic Management, from the Paris Graduate School of Management, Paris, France. He is fluent in English
Adesoji Adeyemi	Auditor	Legal and Environment	PhD in Forest Resources Management, MSc in Forest Biometrics and Remote Sensing and BSc in Forest Resources Management from the University of Ibadan, Nigeria. HCV Lead Assessor's Course by Proforest in 2015; Certificate Course in Google Earth Engine Applications to Natural Resources Management Google Headquarters, Mountain View, California, USA in 2017; Geomatics, University of Yaoundé I, Yaoundé, Cameroon in 2017; FSC/PFC Certification Course by the Soil Association Certification, Bedfordshire, UK in 2018; HCS-HCV in 2018; RSPO Online Learning for the 2024 P&C, RSPO Lead Auditors' Supply Chain Certification Audit Course by Proforest in 2019. He worked on RSPO Mock-audit with Proforest in March, 2018; Two RSPO P&C Audits at Siat Nigeria Limited and Presco Plc. in 2018; Two RSPO Supply Chain Certification Audits at Siat Nigeria Limited and Presco Plc., Nigeria in October and November, 2018; RSPO P&C and SCC Audits of Okomu Oil Palm Company Plc. in 2019. He is fluent in English and in Local language.

SCS Global Services invites stakeholders to provide written comments on any of the following issues related to the operations of **Biase Plantations Limited (Calaro POM)**, particularly related to social and environmental impacts.

Topics that you may wish to comment on are as follows:

- Environmental Protection
- Biodiversity conservation
- Opportunity for employment
- Company approach to community development
- Your relationship with the company
- Participation in decision making
- Free, prior and informed consent
- Suggestion for improvement

Comments received within 30 days from the date of this notification will be considered during the certification assessment. Please include the following details in case we need to contact you for additional information or clarification on any issued raised:

Name: _____
 Address: _____
 Email: _____
 Phone number: _____

If you wish your comments to be treated confidentiality or remain anonymous, please indicate 'CONFIDENTIAL' in your correspondence to us. Please send comments to:

Ms. Adriana Cala Director, responsible Palm Oil Programs SCS Global Services 2000 Powell Street, Suite 600 Emeryville, CA 94608 USA Tel: +1.786.281.2707 Email: rspo-sh@scsglobalservices.com	And/or	Paul O. HAMEED Sustainability Manager - Nigeria (BPL/EIL) Calaro Oil Palm Estate, Mbarakom, Akamkpa LGA, Cross River State, Nigeria M + Tel: +234 803 442 8414 Email: oluwayinka.hameed@ng.wilmar-intl.com
--	--------	---

All comments and sources will be kept in strict confidence at the request of the commenter. Also, please feel welcome to forward this message to other stakeholders that you think may have an interest in sharing their perspective on this assessment.



Adriana Cala
 Director, Responsible Palm Oil Programs